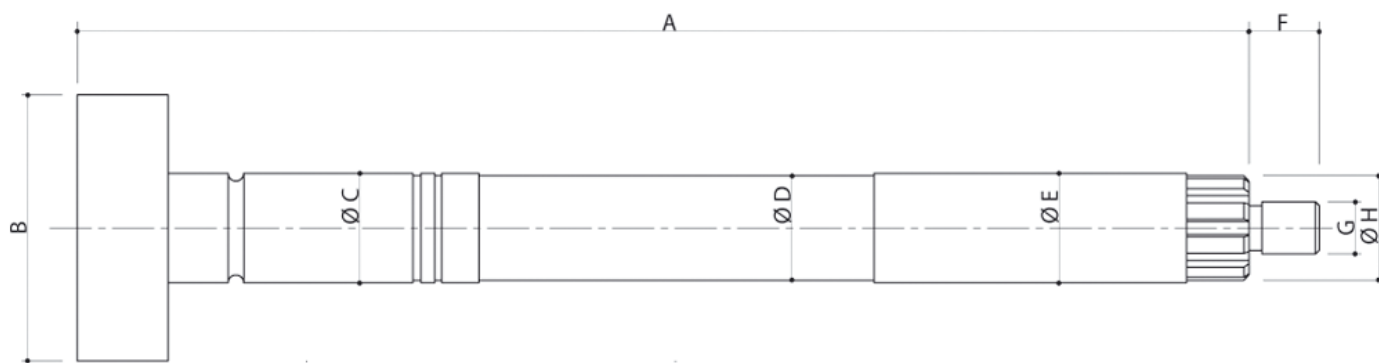


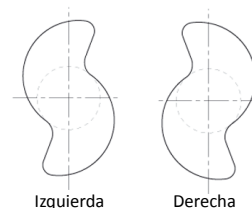
# LEVAS DE FRENO

BRAKE CAMSHAFTS - CAMES DE FREIN

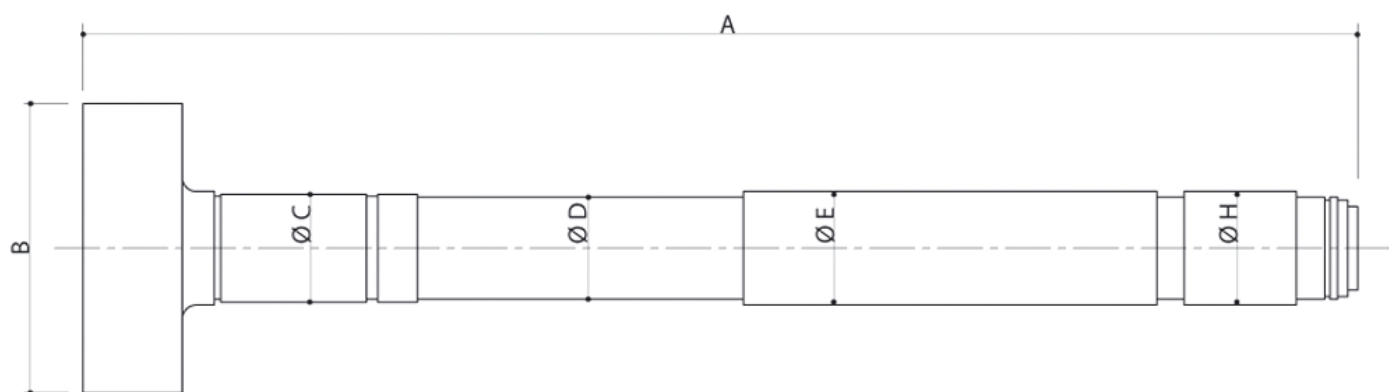
## BPW



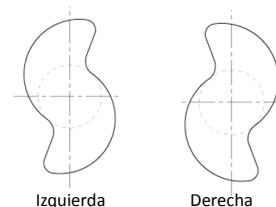
| Ref. Ryme                  | Ref. original | Descripción             | A   | B   | Ø C | Ø D | Ø E | F  | G  | Nº estrias | Ø H |
|----------------------------|---------------|-------------------------|-----|-----|-----|-----|-----|----|----|------------|-----|
| <b>19708</b>               | 0509705091    | Eje leva izq. 477 mm.   | 450 | 103 | 42  | 40  | 42  | 27 | 22 | 10         | 37  |
| <b>19709</b>               | 0509705101    | Eje leva dcha. 477 mm.  | 450 | 103 | 42  | 40  | 42  | 27 | 22 | 10         | 37  |
| <b>19712</b>               | 0509705211    | Eje leva izq. 625 mm.   | 598 | 101 | 42  | 40  | 42  | 27 | 22 | 10         | 37  |
| <b>19713</b>               | 0509705221    | Eje leva dcha. 625 mm.  | 598 | 101 | 42  | 40  | 42  | 27 | 22 | 10         | 37  |
| <b>19714</b>               | 0509705291    | Eje leva izq. 731 mm.   | 735 | 101 | 42  | 40  | 42  | 27 | 22 | 10         | 37  |
| <b>19715</b>               | 0509705301    | Eje leva dcha. 731 mm.  | 735 | 101 | 42  | 40  | 42  | 27 | 22 | 10         | 37  |
| <b>new</b><br><b>19804</b> | 0509705251    | Eje leva izq. 665 mm .  | 665 | 107 | 42  | 40  | 42  | 27 | 22 | 10         | 37  |
| <b>new</b><br><b>19805</b> | 0509705261    | Eje leva dcha. 665 mm . | 665 | 107 | 42  | 40  | 42  | 27 | 22 | 10         | 37  |

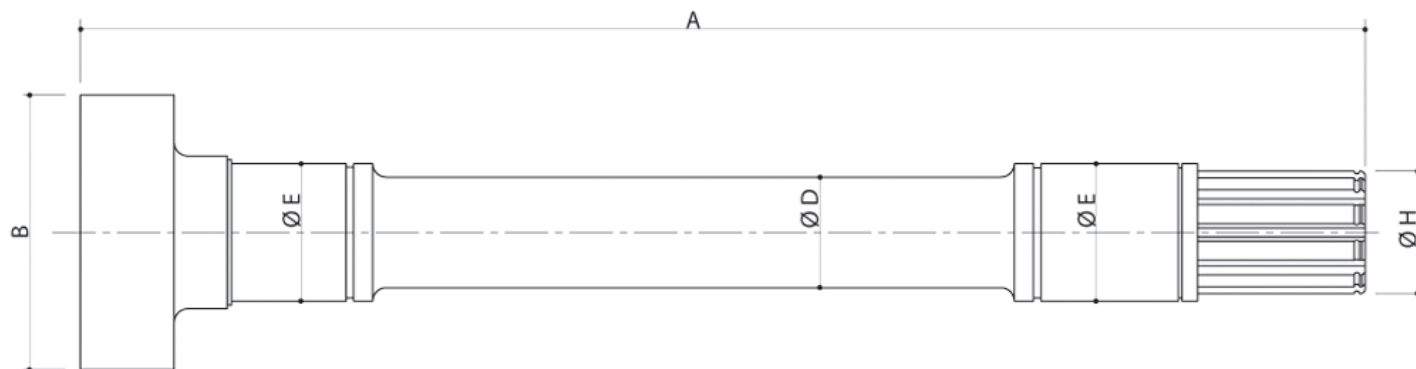


## FRUEHAUF

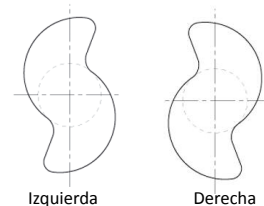


| Ref. Ryme    | Ref. original | Descripción        | A   | B   | Ø C | Ø D | Ø E | Nº estrias | Ø H |
|--------------|---------------|--------------------|-----|-----|-----|-----|-----|------------|-----|
| <b>19722</b> | 103413        | Eje leva izq.      | 460 | 111 | 41  | 40  | 42  | 37         | 40  |
| <b>19723</b> | 103403        | Eje leva dcha.     | 460 | 111 | 41  | 40  | 42  | 37         | 40  |
| <b>19724</b> | AJA0476003    | Eje leva izq.      | 590 | 101 | 41  | 40  | 42  | 37         | 40  |
| <b>19725</b> | AJA0476004    | Eje leva dcha.     | 590 | 101 | 41  | 40  | 42  | 37         | 40  |
| <b>19758</b> | 21521         | Eje leva izq. 15"  | 645 | 83  | 41  | 39  | 42  | 37         | 40  |
| <b>19759</b> | 21522         | Eje leva dcha. 15" | 645 | 83  | 41  | 39  | 42  | 37         | 40  |
| <b>19772</b> | 21510         | Eje leva izq.. 15" | 473 | 83  | 41  | 39  | 42  | 37         | 40  |
| <b>19773</b> | 21511         | Eje leva dcha. 15" | 473 | 83  | 41  | 39  | 42  | 37         | 40  |
| <b>19789</b> | 9010394       | Eje leva izq. 15'  | 597 | 83  | 41  | 39  | 42  | 37         | 40  |
| <b>19790</b> | 9010395       | Eje leva dcha. 15" | 597 | 83  | 41  | 39  | 42  | 37         | 40  |

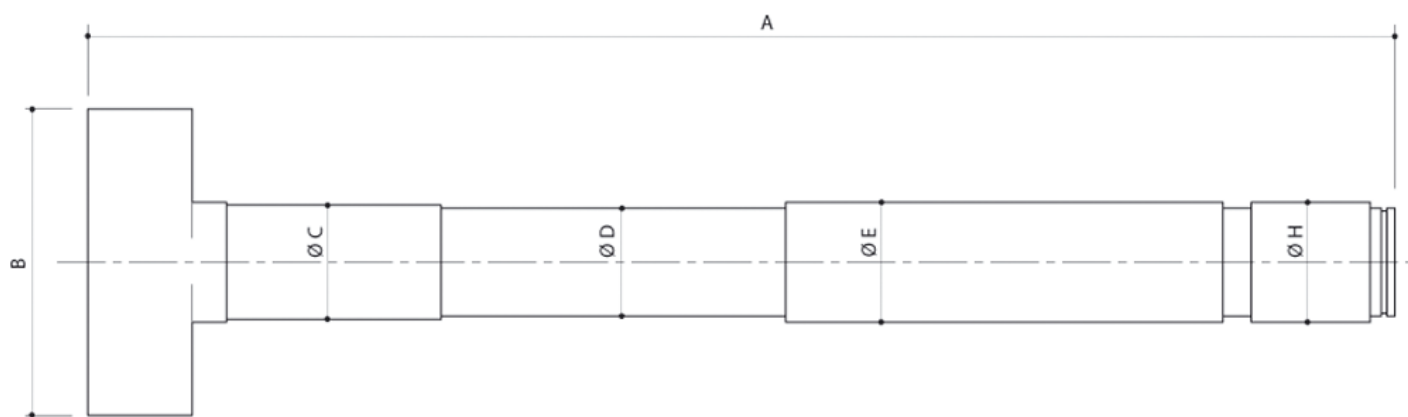




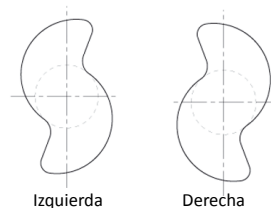
| Ref. Ryme | Ref. original |                         | A   | B   | Ø C | Ø D | Ø E | Nº estrias | Ø H |
|-----------|---------------|-------------------------|-----|-----|-----|-----|-----|------------|-----|
| 19740     | 120015000119  | Eje leva izq.           | 505 | 103 | 45  | 38  | 45  | 10         | 37  |
| 19741     | 120015000118  | Eje leva dcha.          | 505 | 103 | 45  | 38  | 45  | 10         | 37  |
| 19764     | 3120032210    | Eje leva 15" izq.       | 625 | 84  | 45  | 38  | 45  | 10         | 37  |
| 19765     | 3120042210    | Eje leva 15" dcha.      | 625 | 84  | 45  | 38  | 45  | 10         | 37  |
| 19768     | 120015000046  | Eje leva izq. Eje B.PW  | 645 | 110 | 45  | 45  | 45  | 10         | 37  |
| 19769     | 120015000045  | Eje leva dcha. Eje B.PW | 645 | 110 | 45  | 45  | 45  | 10         | 37  |



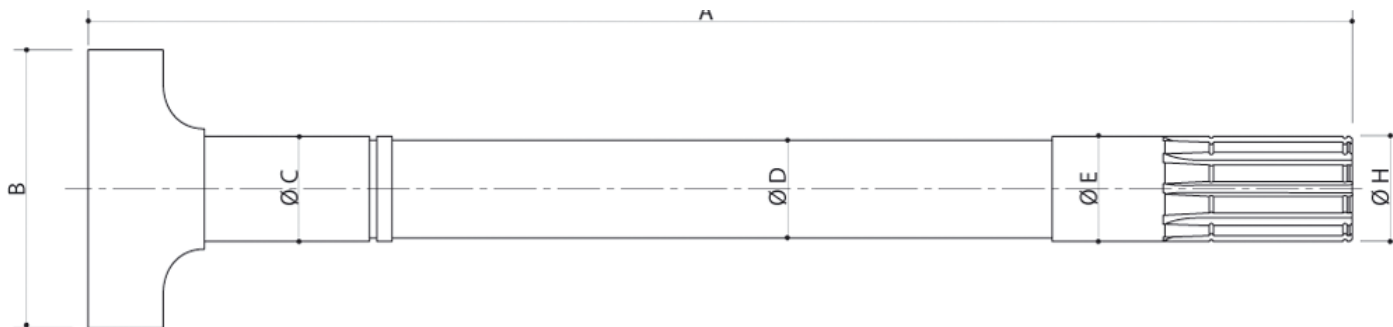
MAN / MERCEDES



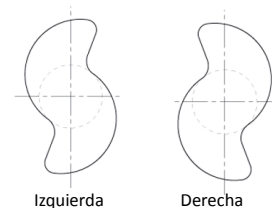
| Ref. Ryme | Ref. original | Descripción                     | A   | B  | Ø C | Ø D | Ø E | Nº estrias | Ø H |
|-----------|---------------|---------------------------------|-----|----|-----|-----|-----|------------|-----|
| 19704     | 3464231136    | Eje leva DL 410 x 160/180 izq.  | 540 | 91 | 42  | 42  | 42  | 26         | 37  |
| 19705     | 3464231236    | Eje leva DL 410 x 160/180 dcha. | 540 | 91 | 42  | 42  | 42  | 26         | 37  |



## MONTENEGRO



|              | Ref. original | Descripción        | A   | B   | Ø C | Ø D | Ø E | Nº estrias | Ø H |
|--------------|---------------|--------------------|-----|-----|-----|-----|-----|------------|-----|
| <b>19736</b> | 0601057       | Eje leva 460 izq.  | 460 | 99  | 38  | 37  | 37  | 10         | 38  |
| <b>19737</b> | 0601056       | Eje leva 460 dcha. | 460 | 99  | 38  | 37  | 37  | 10         | 38  |
| <b>19738</b> | 0601017       | Eje leva 535 izq.  | 535 | 103 | 38  | 37  | 37  | 10         | 38  |
| <b>19739</b> | 0601016       | Eje leva 535 dcha. | 535 | 103 | 38  | 37  | 37  | 10         | 38  |
| <b>19760</b> | 0601357       | Eje leva 600 izq.  | 600 | 105 | 38  | 37  | 37  | 10         | 38  |
| <b>19761</b> | 0601356       | Eje leva 600 dcha. | 600 | 105 | 38  | 37  | 37  | 10         | 38  |

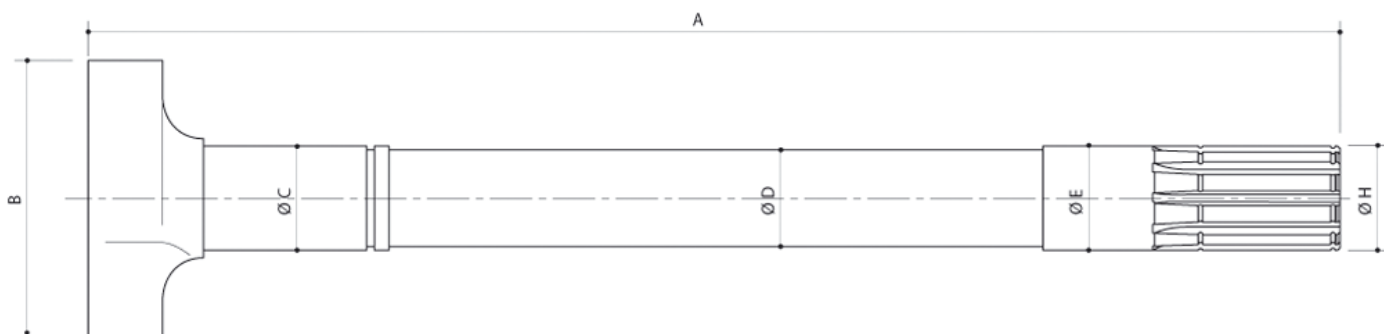


Accede a  
nuestra plataforma  
**B2B**

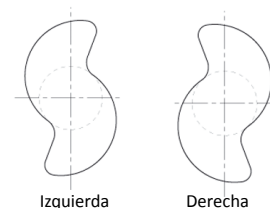
Solicita tus claves de acceso  
[info@rymeautomotive.com](mailto:info@rymeautomotive.com)

- Busqueda de Artículos
- Realizar Pedidos
- Seguimiento de Pedidos
- Consultar Stock
- Posibilidad de MultiUsuario
- Consultar Facturas, albaranes...
- Descargar Catálogos, Tarifas...
- Disponible 24 horas 7 días a la semana

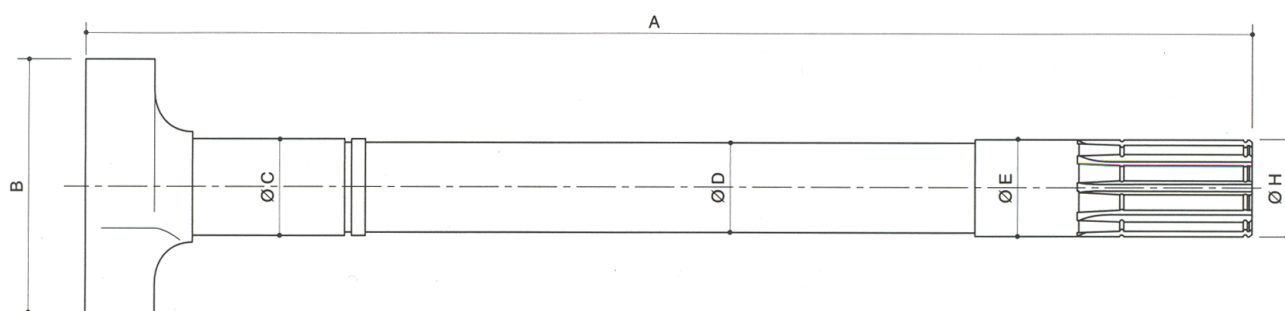




|                            | Ref. original         | Descripción         | KIT     | A     | B   | Ø C | Ø D | Ø E | Nº estrias | Ø H |
|----------------------------|-----------------------|---------------------|---------|-------|-----|-----|-----|-----|------------|-----|
| <b>19726</b>               | 21205406              | Eje leva izq.       | AXL 112 | 570   | 102 | 38  | 36  | 36  | 10         | 37  |
| <b>19727</b>               | 21205407              | Eje leva dcha.      | AXL 112 | 570   | 102 | 38  | 36  | 36  | 10         | 37  |
| <b>19728</b>               | 21202755<br>21219258S | Eje leva izq.       | AXL 132 | 570   | 105 | 42  | 40  | 40  | 10         | 37  |
| <b>19729</b>               | 21202754<br>21219257S | Eje leva dcha.      | AXL 132 | 570   | 105 | 42  | 40  | 40  | 10         | 37  |
| <b>19779</b>               | 21224796              | Eje leva izq.       | AXL 122 | 635   | 105 | 42  | 40  | 38  | 10         | 37  |
| <b>19780</b>               | 21224795              | Eje leva dcha.      | AXL 122 | 635   | 105 | 42  | 40  | 38  | 10         | 37  |
| <b>19781</b>               | 21221071S             | Eje leva izq.       | AXL 122 | 567   | 105 | 42  | 40  | 38  | 10         | 37  |
| <b>19782</b>               | 21221070S             | Eje leva dcha.      | AXL 122 | 567   | 105 | 42  | 40  | 38  | 10         | 37  |
| <b>19783</b>               | 21219337<br>2121318   | Eje leva izq. 15"   | AXL 132 | 650   | 85  | 42  | 40  | 38  | 10         | 37  |
| <b>19784</b>               | 21219338<br>21212319  | Eje leva dcha.. 15" | AXL 132 | 650   | 85  | 42  | 40  | 38  | 10         | 37  |
| <b>19785</b>               | 2121309<br>21219336   | Eje leva izq. 15"   | AXL 132 | 575   | 85  | 38  | 38  | 38  | 10         | 37  |
| <b>19786</b>               | 2121308<br>21219335   | Eje leva dcha..15"  | AXL 132 | 575   | 85  | 38  | 38  | 38  | 10         | 37  |
| <b>19787</b>               | 21219322<br>21212347  | Eje leva izq.       | AXL 132 | 656   | 93  | 42  | 40  | 38  | 10         | 37  |
| <b>19788</b>               | 21219321<br>21212346  | Eje leva dcha.      | AXL 132 | 656   | 93  | 42  | 40  | 38  | 10         | 37  |
| <b>19796</b>               | 21227108              | Eje leva izq.       | AXL 140 | 635   | 105 | 41  | 40  | 38  | 10         | 37  |
| <b>19797</b>               | 21227107              | Eje leva dcha.      | AXL 140 | 635   | 105 | 41  | 40  | 38  | 10         | 37  |
| <b>new</b><br><b>19802</b> | 21221195R             | Eje leva izq        | AXL 122 | 632   |     |     |     |     |            |     |
| <b>new</b><br><b>19803</b> | 21221194R             | Eje leva dcha.      | AXL 122 | 632   |     |     |     |     |            |     |
| <b>new</b><br><b>19806</b> | 21227110R             | Eje leva izq.       | AXL 140 | 525,5 |     |     |     |     |            |     |
| <b>new</b><br><b>19807</b> | 21227109R             | Eje leva dcha       | AXL 140 | 525,5 |     |     |     |     |            |     |
| <b>new</b><br><b>19808</b> | 21219344R             | Eje leva izq.       | AXL 132 | 736,3 |     |     |     |     | 10         |     |
| <b>new</b><br><b>19809</b> | 21219343R             | Eje leva dcha       | AXL 132 | 736,3 |     |     |     |     | 10         |     |



## SAF SAUER



|                            | Ref. original | Descripción        | A   | B   | Ø C | Ø D | Ø E | Nº estrias | Ø H |
|----------------------------|---------------|--------------------|-----|-----|-----|-----|-----|------------|-----|
| <b>19792</b>               | 2262028302    | Eje leva izq. SNK  | 704 | 100 | 38  | 37  | 38  | 10         | 37  |
| <b>19793</b>               | 2262029402    | Eje leva dcha. SNK | 704 | 100 | 38  | 37  | 38  | 10         | 37  |
| <b>19798</b>               | 2262110301    | Eje leva izq. SNK  | 720 | 100 | 56  | 40  | 38  | 10         | 37  |
| <b>19799</b>               | 2262110201    | Eje leva dcha. SNK | 720 | 100 | 56  | 40  | 38  | 10         | 37  |
| <b>new</b><br><b>19800</b> | 2262110302    | Eje leva izq. SK   | 720 | 100 | 46  | 40  | 38  | 10         | 37  |
| <b>new</b><br><b>19801</b> | 2262110202    | Eje leva dcha. SK  | 720 | 100 | 46  | 40  | 38  | 10         | 37  |

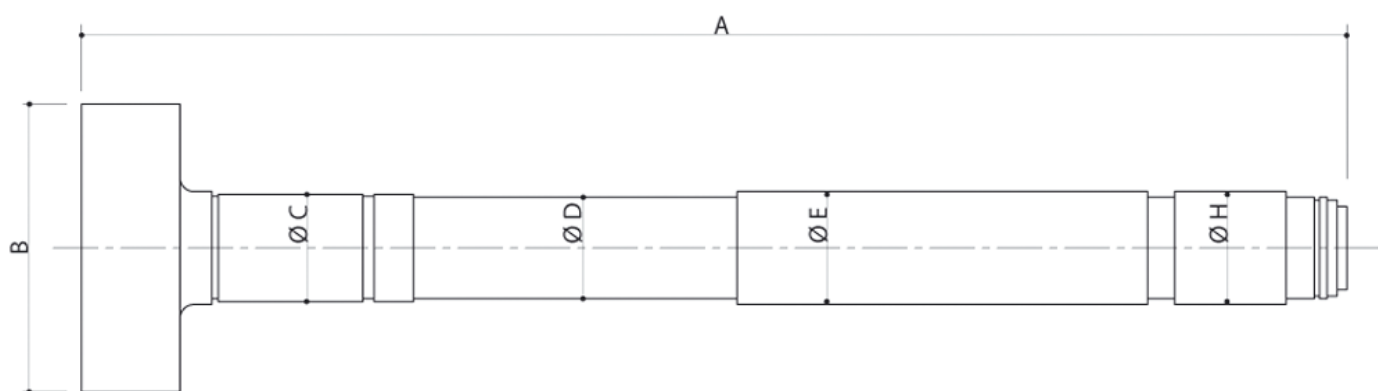


Izquierda



Derecha

## SMB



|              | Ref. original | Descripción    | A   | B   | Ø C | Ø D | Ø D | Nº estrias | Ø H |
|--------------|---------------|----------------|-----|-----|-----|-----|-----|------------|-----|
| <b>19770</b> | M044465       | Eje leva izq.  | 635 | 105 | 38  | 39  | 42  | 10         | 40  |
| <b>19771</b> | M044473       | Eje leva dcha. | 635 | 105 | 38  | 39  | 42  | 10         | 40  |



Izquierda



Derecha